

check us out online at  
[www.schoolhealth.com](http://www.schoolhealth.com)



School Health now has extensive product education available online, giving you the resources necessary to convince even the tightest of budget keepers. We also provide the ability to email or print these pages for your decision-makers and key influencers.

**Competitive Pricing • Education • Quality Products**

**Great Selection • Reliable Service**



865 MUIRFIELD DRIVE  
 HANOVER PARK, IL 60133  
 1-800-323-1305

“Welch Allyn and School Health made implementing our district SureSight Vision Screening program smooth. They have been dependable and professional with our training and support needs.”

— ANN RIOJAS  
 MPS NURSING SUPERVISOR  
 MILWAUKEE, WI

SCHOOL HEALTH  
 MEDICINE

4341 State Street Road, P.O. Box 220, Skaneateles Falls, NY 13153-0220 USA  
 (P) 800-535-6663 (F) 315-685-3361 [www.welchallyn.com](http://www.welchallyn.com)



Advancing Frontline Care™

© 2003, Welch Allyn, Inc. Printed in USA SM2526 Rev B  
 Nellcor® is a registered trademark of Nellcor Puritan Bennett Inc. ThermoScan® is a registered trademark of Braun GmbH.



Advancing Frontline Care™

# Welch Allyn. The First Name After Your Own at the Point of Care.

School Health Corporation is proud to be Welch Allyn's distribution partner in the school, public health, daycare, athletic and physician markets. School Health offers innovative medical products and supplies that are exceptionally well made and competitively priced. In addition, School Health provides reliable service, as well as education on how to best use these products. Imparting all of these services, we help our customers improve the health and well being of those entrusted in their care.

## SCHOOL HEALTH MEDICINE

- 1 Professional PenLite #WC90-491 Pg. 14
- 2 3.5v StrabismoScope Unidirectional Occluder #WC53-062 Pg. 2
- 3 Braun ThermoScan® Pro3000 #WC13-057 Pg. 4
- 4 Ear Wash System #WC42-075 Pg. 14
- 5 MicroTym® 2 Portable Tympanometric Instrument #WC53-009 Pg. 12
- 6 AudioScope® 3 Screening Audiometer/Otoscope #WC53-011 Pg. 12
- 7 SureSight™ Vision Screener #WC52-316 Pg. 10
- 8 767 Integrated Diagnostic System #WC53-104 Pg. 9
- 9 LS-135 Halogen Examination Light #WC24-303 Pg. 18
- 10 Master Elite Stethoscope #WC57-081 Pg. 17
- 11 DuraShock™ Integrated Aneroid #WC53-101 Pg. 7
- 12 Pedia Pals® Polar Bear Couch #WC24-401 Pg. 2

For more information on the products in this catalog, visit our website at [www.schoolhealth.com](http://www.schoolhealth.com)





### **BRAUN** *ThermoScan*. Pro3000

For patients and situations that require fast action, take temperatures in a second—literally—with infrared technology that measures body temperature accurately through the ear. Ideal for small children.

- Non-intimidating appearance for children
- Sensor scans eight temperatures in one second, displaying the highest reading
- Built-in safeguards virtually eliminate risk of cross-contamination
- Soft, comfortable probe cover keeps probe tip clean for accuracy
- Easy-to-read LCD in Fahrenheit or Celsius
- Has last temperature recall capability
- Takes approximately 5,000 readings on two lithium batteries

#WC13-057 Braun ThermoScan Pro3000

#WC21-093 Probe Covers (Box of 200)

#WC21-094 Probe Covers (Box of 800)

Buy a Pro3000 thermometer from School Health and receive a Pack of 200 Probe Covers (WC21-093) and a wall mount/dispenser (WC13-065) FREE!

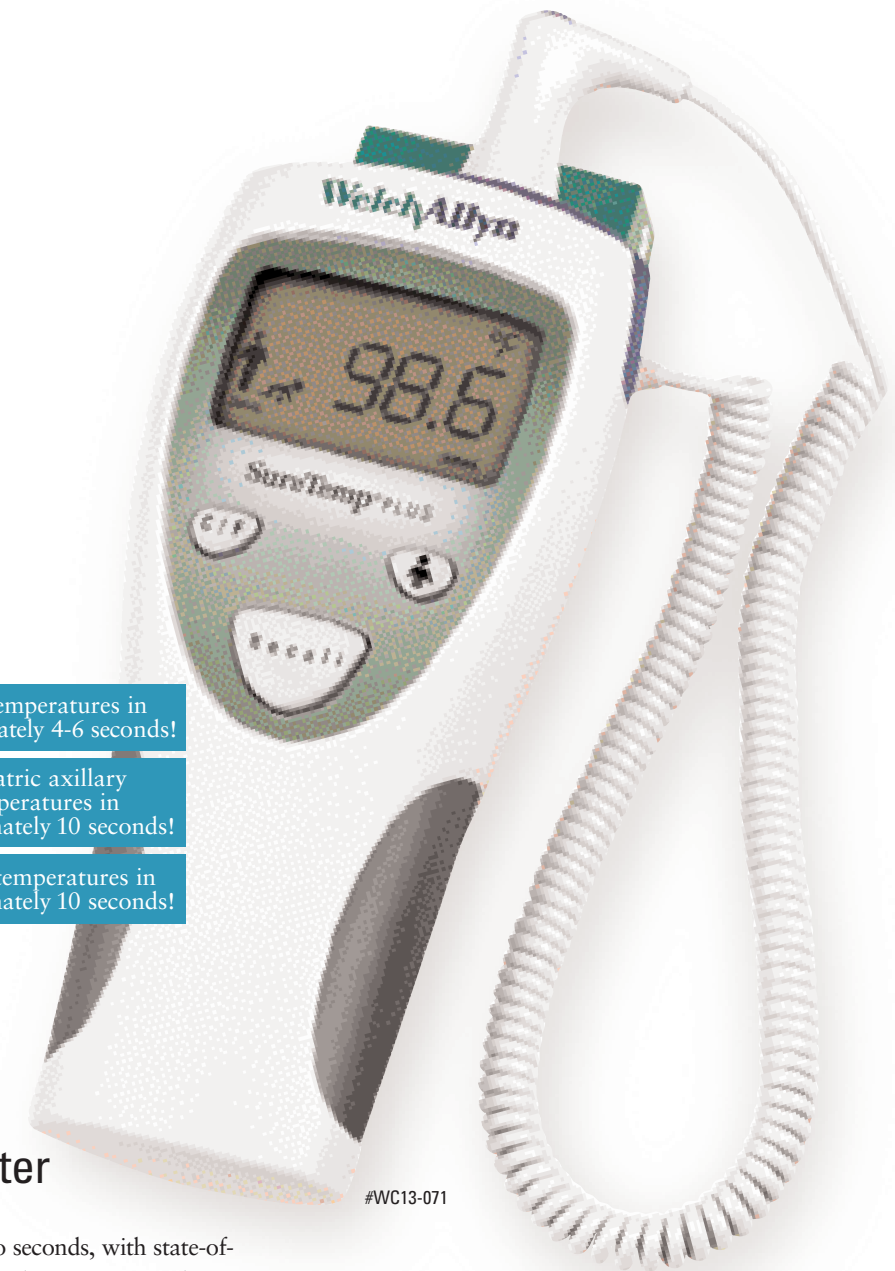


To meet the needs of a busy school nurse's office, Welch Allyn offers a variety of modalities for temperature-taking for your patients.

Oral temperatures in approximately 4-6 seconds!

Pediatric axillary temperatures in approximately 10 seconds!

Rectal temperatures in approximately 10 seconds!



### SureTemp® Plus 690 Electronic Thermometer

Reduce one of your most routine tasks to seconds, with state-of-the-art electronic thermometry that is the ultimate in providing combined speed, flexibility, and accuracy.

- Accurate to within +/- 0.2°F (0.1°C)
- Interchangeable, removable probe wells to reduce the risk of cross-contamination
- Large LCD display that can display temperatures in Fahrenheit or Celsius
- Last temperature recall
- Convenient storage for 25 probe covers
- Takes approximately 6000 readings on 3 AA batteries

#WC13-071 SureTemp Plus 690 Thermometer,

Oral Probe and Well

#WC90-408 Wall Mount

#WC21-177 Probe Covers (Box of 1,000)

#WC21-178 Probe Covers (Box of 250)



Buy a SureTemp from School Health and receive 1000 FREE probe covers!



#WC56-000

## Tycos® Classic Hand Aneroid

Unsurpassed reliability in a traditional, handheld design.

- Certified accuracy to  $\pm 3$ mm Hg
- Latex-free for safety
- Ruby jeweled movement for long life
- Laser-engraved dial face for accuracy
- Durable one-piece cuff
- Lifetime warranty

- #WC56-000 Complete Aneroid with Child Velcro Cuff
- #WC56-002 Complete Aneroid with Adult Velcro Cuff
- #WC56-083 Print Multi-Cuff Kit with Durable One-Piece Cuff



#WC56-003

## Tycos® Classic Pocket Aneroid

Top-of-the-line gauge attaches securely to the cuff to prevent accidental dropping and easy reading.

- #WC56-003 Complete Aneroid with Adult Velcro Cuff
- #WC56-001 Complete Aneroid with Child Velcro Cuff
- #WC56-084 Complete Aneroid with Large Adult Velcro Cuff



#WC56-061

## Tycos® TR2 Trigger Aneroid

Lightweight and compact, provides portability in an affordably-priced, hand-held design. Trigger release air valve is positioned for optimal left- or right-handed use, and allows for easy fingertip control of cuff deflation—crucial for accurate measurements. Large, easy-to-read dial face with bright graphics. Five-year warranty.

- #WC56-061 TR2 Aneroid with Adult Cuff and Zippered Case
- #WC56-065 TR2 with Large Adult Velcro Cuff and Zippered Case
- #WC56-066 TR2 Aneroid with Child Print Cuff and Zippered Case

## Welch Allyn DuraShock™ DS44 Integrated Aneroid

The first gear-free, shock-resistant aneroid sphygmomanometer delivers more accurate, lower cost blood pressure readings because the gauge stays calibrated longer than traditional gauges with gears.

- Meets AAMI shock-resistant standard
- Gauge rotates 360° for easy viewing and snaps directly into cuff for quick cuff change
- Lightweight and latex-free for safety
- Durable one-piece cuff
- 5-year warranty

- #WC53-101 DS-44 Sphygmomanometer with Child Print Cuff
- #WC53-100 DS-44 Sphygmomanometer with Adult Cuff
- #WC53-097 Adult Cuff Only
- #WC90-461 Color Bumper Variety Pack
- #WC53-111 Vinyl Carrying Case



#WC53-100

## Welch Allyn DuraShock™ DS45 Integrated Aneroid

- Laser-engraved dial face for accuracy
- 10-year warranty

- #WC56-114 DS-45 Sphygmomanometer with Child Cuff
- #WC56-115 DS-45 Sphygmomanometer with Adult Cuff



#WC56-115

Exclusively through School Health, buy a DuraShock and get a FREE Inflation System!



Gauge rotates 360° for easy viewing and snaps directly into cuff for quick cuff changes



Innovative left- or right-arm cuff design for more accurate cuff placement



30"

### SHOCK-RESISTANT DESIGN

The first and only aneroid sphygmomanometer made without gears, it meets or exceeds AAMI SP9 specifications for shock resistance and maintains its performance characteristics after a 30-inch drop onto a hard surface.



MODEL	DS44
DIAL FACE	pre-printed
BUMPER	changable one-piece
BULB	medium, gray
VALVE	standard
CUFF	durable, two-tone
CASE	vinyl (optional)
WARRANTY	5 years



MODEL	DS45
DIAL FACE	laser engraved
BUMPER	permanent premium
BULB	*large, black
VALVE	Tycos® long life
CUFF	durable, two-tone
CASE	nylon (optional)
WARRANTY	10 years

\*Adult and larger sizes

For more information on innovative DuraShock technology, visit [www.welchallyn.com/durashock](http://www.welchallyn.com/durashock)

EXAMINATION AND TREATMENT

I can always count on the quality of your products and the excellent service provided by our school health representative. Thank you again for ongoing excellent service.

— MARGARET B. EWING, RN, SNP, M.ED,  
NEW TOWN SQUARE, PA

“We purchased the Welch Allyn Integrated Diagnostic System for all our new health-care center exam rooms and have been extremely pleased. They’ve added to our efficiency.”

— PAUL LOISELLE  
EXECUTIVE DIRECTOR, HEALTH CARE,  
UNIVERSITY OF NEW ENGLAND

## 767 Integrated Diagnostic Systems

Otoscope, ophthalmoscope, thermometer, sphygmomanometer, probe covers, eartips—all the essential diagnostic instruments and consumables for every Pediatrics exam room, integrated for efficiency and convenience.

- Choice of the revolutionary PanOptic™ Ophthalmoscope\*\* or a 3.5v Coaxial Ophthalmoscope
- Handle-based rheostats for quick light intensity adjustment
- 767 Wall Aneroid with easy-to-read dial face, certified accuracy, and lifetime calibration program
- KleenSpec® Plus Disposable Specula Dispenser, pre-filled with ear specula
- Purchase individual components to design the system that is right for you.

\*For full details on Otoscopes/Ophthalmoscopes, see page 14 and 15.

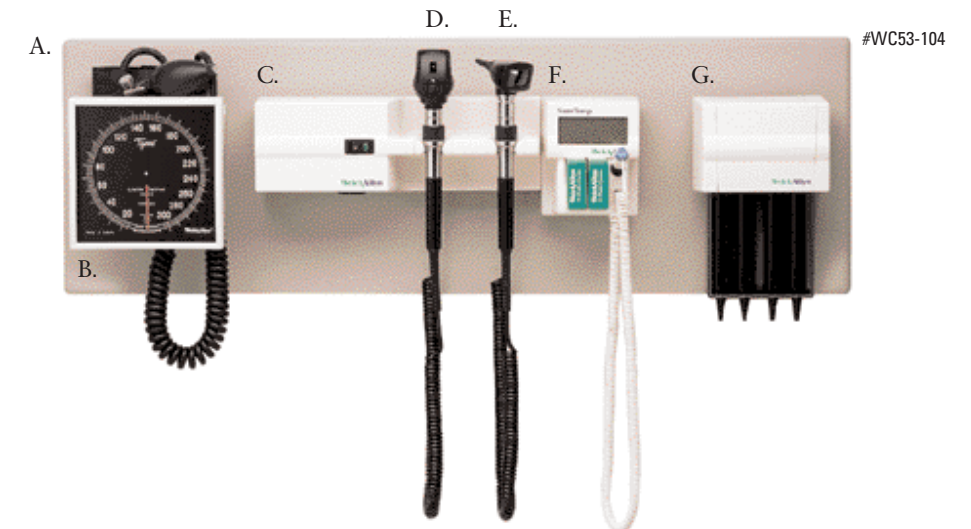
\*\*For full details on the PanOptic Ophthalmoscope, see page 11.

### 767 INTEGRATED DIAGNOSTIC SYSTEM

- A. #WC53-104 767 Integrated Diagnostic System
- B. #WC56-086 Tycos® Wall Aneroid with Adult Cuff
- C. #WC53-073 3.5v Wall Transformer
- D. #WC53-075 Ophthalmoscope Head
- E. #WC53-074 Otoscope with 4 Specula
- F. #WC13-069 SureTemp® 767 Electronic Thermometer
- G. #WC53-076 KleenSpec Plus Disposable Specula Dispenser

### UPGRADE TO PANOPTIC

- OPHTHALMOSCOPE HEAD
- #WC53-122 Upgrade to PanOptic Ophthalmoscope Head





## SureSight™ Vision Screener

Test for the primary vision disorder in children, refractive error, with the truly child-friendly vision screener that engages youngsters, puts them at ease, and requires minimal cooperation.

- Extremely child-friendly with lights and sounds that engage a child's attention
- Five-second, automatic, objective test makes patient compliance easier
- Measures and indicates abnormal readings automatically—no provider interpretation is required
- Operates at a non-threatening 14-inch (35 cm) distance
- Minimal cooperation is necessary, making it equally effective for children, disabled patients, and those with a language barrier
- Relevant CPT Code\*: 92015, 99173

#WC52-316 SureSight Vision Screener

#WC52-317 Carry Case

#WC52-318 SureSight Printer



#WC52-350

## SureSight™ Vision Screening Package

Includes SureSight Vision Screener; SureSight printer and carry case; Eye Model with 2-sided color anatomical key card; laminated, full-size color eye chart; a roll of "Eye's Checked" stickers and the Welch Allyn® EENT CD-ROM.

#WC52-350 SureSight Vision Screener Package

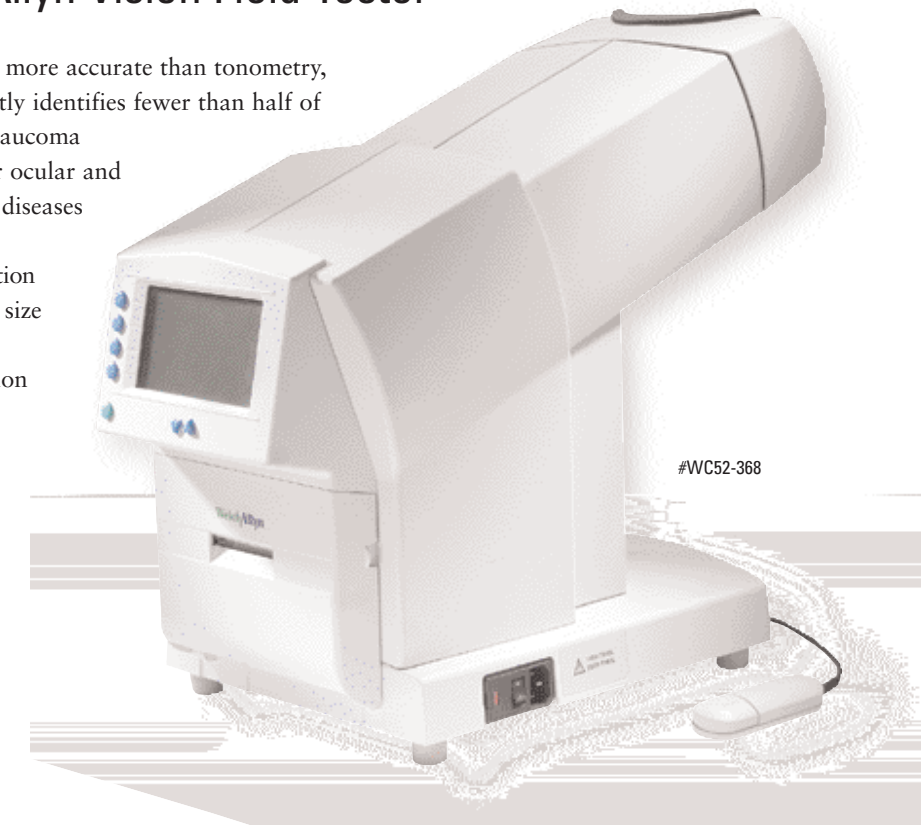
“PanOptic's breadth of the field of view gives me a much greater visual appreciation of retinal structures. It increases my confidence during an exam.”

— LARRY CULPEPPER, MD  
BOSTON, MA

## Welch Allyn Vision Field Tester

- Substantially more accurate than tonometry, which correctly identifies fewer than half of those with glaucoma
- Detects other ocular and neurological diseases as well
- Simple operation and compact size

#WC52-368 Vision Field Tester



#WC52-368



#WC53-096

## PanOptic™ Ophthalmoscope

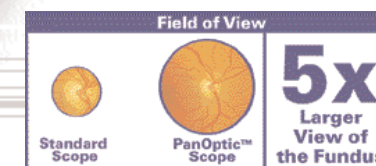
The revolutionary PanOptic provides easy entry into the eye, together with a wider field of view to more easily observe conditions such as papilledema and hemorrhages consistent with shaken baby syndrome.

- Fast, easy entry into undilated pupils
- 5x larger view of the fundus vs. standard scopes in an undilated eye
- 25° field of view vs. the standard 5° field of view
- Greater working distance improves comfort for both practitioner and patient
- Compatible with all existing Welch Allyn 3.5v power sources
- Free diagnostic wall chart available

#WC53-096 PanOptic Ophthalmoscope (Head Only)

#WC90-455 Patient Eyecups (package of 5)

#WC53-094 Halogen HPX™ Lamp

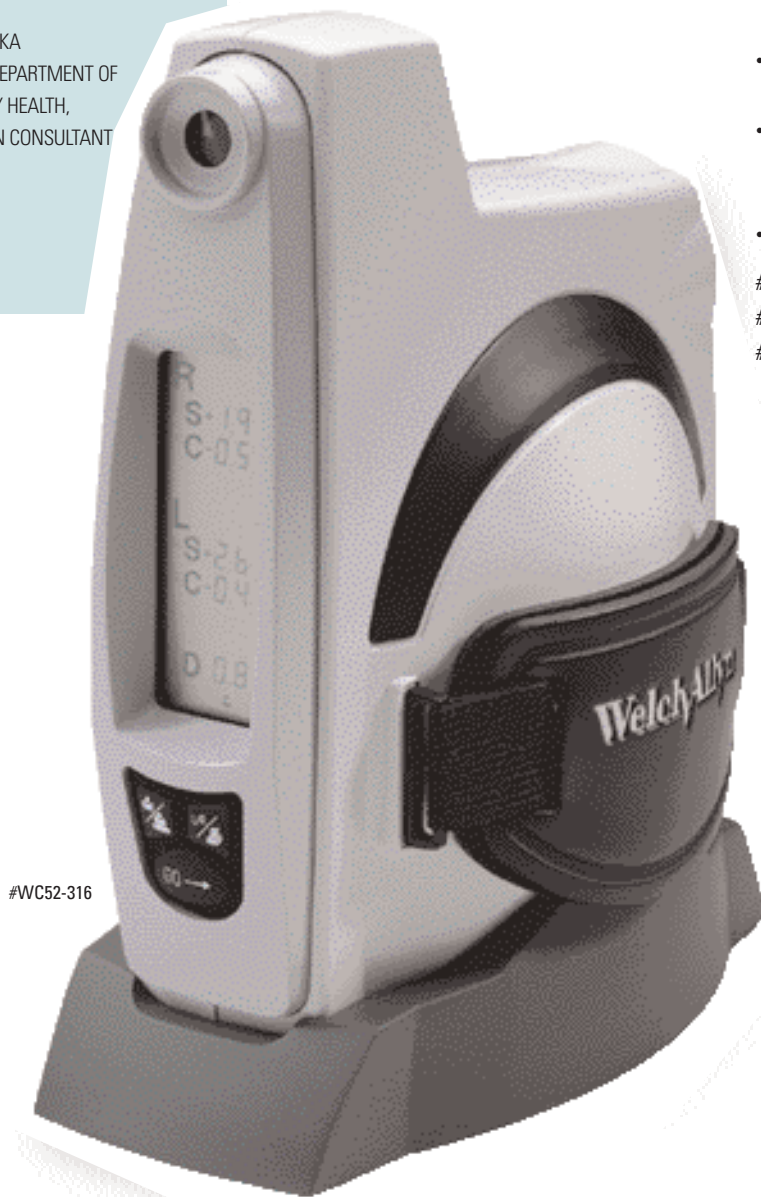


Field of View  
Standard Scope    PanOptic™ Scope    5x Larger View of the Fundus

See [www.panoptic.welchallyn.com](http://www.panoptic.welchallyn.com) for an interactive demo.

“The SureSight Vision Screener has been adopted as a user-friendly and effective screening tool for our Early On programs in Michigan.”

— GEORGE ZARKA  
MICHIGAN DEPARTMENT OF COMMUNITY HEALTH,  
STATE VISION CONSULTANT



#WC52-316

“I've been screening between 2,000 and 8,000 preschoolers each year for the last 25 years. The Welch Allyn SureSight Vision Screener has made my job so much more accurate and efficient.”

## MicroTym® 2 Portable Tympanometric Instrument

The fastest, easiest, most complete portable tympanometric instrument.

- Provides objective information for the diagnosis of otitis media
- Useful for other middle ear conditions, such as patent tympanostomy tube, otosclerosis, ossicular disruption and cholesteatoma
- Test in one second, print out results in five seconds
- LCD preview screen ensures reliable results before printing
- Printouts include: tympanogram, numerical form, and interpretive messages
- Laminated wall chart to assist patient education
- Relevant CPT Code\*: 92567

#WC53-009 MicroTym 2 Set with Charging Stand and Printer

#WC53-010 Carrying Case

#WC53-054 Set of Tips, 4 color coded sizes



#WC53-009

## AudioScope® 3 Screening Audiometer/Otoscope

View the tympanic membrane and ear canal while screening for hearing loss, quickly and accurately.

- Halogen light and fiber optics afford brilliant view of tympanic membrane and ear canal before and during screening
- Choice of three screening levels—20 dB HL, 25 dB HL and 40 dB HL—at 500, 1000, 2000 and 4000 Hz for all ages
- Built-in 1000 Hz pretone lets patients “practice” listening first
- Relevant CPT Code\*: 92551, 92552

#WC53-011 AudioScope 3, Complete (AudioScope 3, Set of AudioSpecs, Charging Stand, Recording Forms)

#WC53-051 Set of AudioSpecs

#WC53-044 Soft Case for AudioScope

Purchase an AudioScope from School Health and receive a FREE sleeve of KleenScoop! (Combination otoscope specula and cerumen remover)



#WC53-011

“The Welch Allyn Ear Wash System is so convenient. It’s much less irritating ...and much easier and cleaner than the syringe we had used.”

— CHERY MEY, RN  
ADAMS, MN

## Welch Allyn Ear Wash System

Turn the entire process of cerumen removal into a clean, quick, safe procedure, with the first system to simultaneously irrigate and suction discharge using revolutionary Hydrovac Action from Welch Allyn.

- Eliminates messy outflow by automatically dislodging, removing and disposing of cerumen
- Transparent tip seals tightly and directs outflow back to sink and away from you and your patient
- Features include: pressure regulation, temperature indicator/control, and suctioning action
- Safe and effective

#WC42-075 Welch Allyn Ear Wash System

#WC42-076 Eartips for Ear Wash System (One box of 25)

#WC42-074 Eartips for Ear Wash System (Four boxes of 25)



#WC42-075

See [www.earwash.welchallyn.com](http://www.earwash.welchallyn.com) for an interactive demo.



#WC53-102

## 3.5v Lithium-Ion Rechargeable Handle

Twice the power, half the weight.

- Smaller diameter and half the weight of 3.5v Ni-Cad handles
- 120 minutes of operation between charges (compared to 60 minutes for standard Ni-Cad handles)
- Charges in new Universal Desk Charger or with removable AC adapter
- Compatible with all Welch Allyn 3.5v instrument heads
- Low battery indicator light

#WC53-102 Handle with Removable AC Adapter

## 2.5v PocketScope™ Set

In the office or out, you'll always have the accuracy and convenience of Welch Allyn diagnostics right in your pocket.

- 2.5v PocketScope Ophthalmoscope with consistent, long-lasting halogen illumination for true tissue color
- 2.5v Otoscope with built-in throat illuminator gives you two instruments in one, with halogen illumination and fiber optics for cool light
- Adjustable rheostat to control light intensity
- Powered by AA batteries

#WC53-115 PocketScope Set with Hard Case



#WC53-115

## Professional PenLite

For quick and effective evaluation of the pupillary reflex.

- Bright, white halogen light for true tissue color rendition
- Durable solid brass construction

#WC90-491 Professional PenLite



#WC90-491

## PocketScope™ Otoscope/Throat Illuminator

- Halogen light for true tissue color and consistent, long-lasting illumination
- Simply detach the otoscope head to use the throat illuminator or all-purpose penlight
- Fiber optics provide cool light with no reflections and no obstructions

#WC53-038

2.5v PocketScope Otoscope/Throat Illuminator with AA Alkaline Battery Handle



#WC53-038

## 3.5v Diagnostic Otoscope

- Halogen HPX™ lamp provides 30% more light output for true tissue color and consistent, long-lasting illumination
- Fiber optics project cool light to the distal tip with no reflections and no obstructions for superior views of the tympanic membrane
- Wide-angle viewing lens allows for instrumentation under magnification

#WC53-008

3.5v Diagnostic Otoscope



#WC53-008

## 2.5v CompacSet™

The perfect "second set" for calls in the hospital, clinic and home.

- Full-featured ophthalmoscope and fiber optic otoscope integrated in one, easy-to-use instrument
- Fold-away design keeps instruments protected on the go
- Halogen illumination gives brighter, whiter, long-lasting light
- Instrument heads swivel for easy access from any position

#WC53-064 CompacSet



#WC53-064

“We love the convenience. Being able to automatically collect all the vital signs in a short amount of time really frees up the nurses.”

— LAURIE MCGRAW, RN  
MINONG, WI

## Spot Vital Signs®

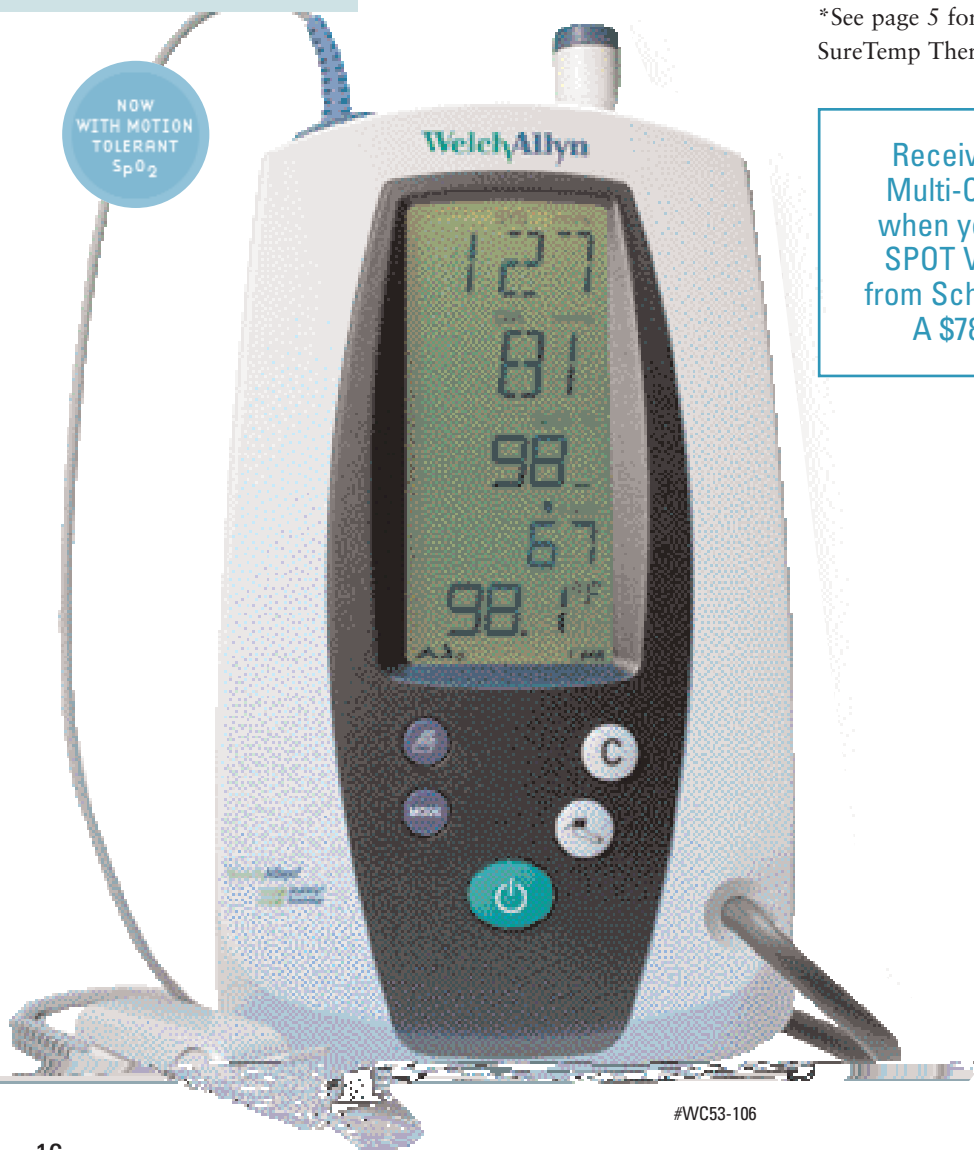
Take vital signs in seconds with hospital-grade technology that spot-checks vital signs easily, accurately and affordably.

- Automated measurement of pediatric and adult vital signs, including non-invasive blood pressure (NIBP), pulse rate, temperature and Pulse Oximetry in 30 seconds
- Lightweight and portable with a variety of mounting options
- All configurations include NIBP, Pulse Rate and MAP
- Optional—SureTemp® Thermometry\*; Nellcor® Pulse Oximetry
- Relevant Pulse Oximetry CPT Codes\*: 94760, 94761

- #WC53-106 Spot with NIBP, Nellcor Pulse Oximetry, Temperature
- #WC53-112 Spot with NIBP
- #WC53-113 Spot with NIBP and Temperature
- #WC53-114 Spot with NIBP, Nellcor Pulse Oximetry
- #WC90-456 Mobile Stand

\*See page 5 for full details on Welch Allyn SureTemp Thermometry.

Receive a FREE Multi-Cuff BP kit when you order a SPOT Vital Signs from School Health. A \$78 value!



#WC53-106



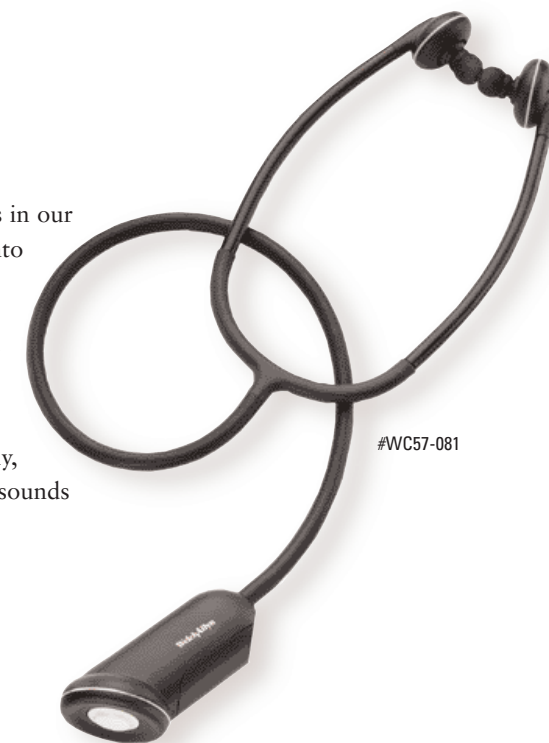
#WC53-106 and #WC90-456

## Master Elite™ Stethoscope

Hear more of what you need and less of what you don't. The key to the extraordinary capabilities of the Master Elite lies in our patented SensorTech™ technology, which enables you to lock onto important sounds, while reducing unwanted ones.

- 2-position filter switch lets you listen in high or low frequency
- Adjustable binaurals and eartips ensure all-day comfort
- Long-life lithium ion battery lasts up to 140 hours
- Optional – the Distributor allows others to hear simultaneously, and the Analyzer provides the ability to store and analyze the sounds you hear right on your PC

- #WC57-081 Master Elite Stethoscope
- #WC57-080 3.6v Batteries



#WC56-118

## Welch Allyn OSZ 5 Automatic Blood Pressure Monitor

- Easy to use one button operation
- “Fuzzy Logic” smart inflation system is faster and more comfortable for the user
- Large, easy-to-read display shows systolic, diastolic, and pulse measurements simultaneously
- Universal cuff fits all arm sizes
- Convenient battery door makes it easy to change batteries.

- #WC56-118 Welch Allyn OSZ 5 Blood Pressure Monitor, Auto Inflation
- #7052-36 Optional Large Adult Cuff
- #7052-37 Optional Voltage Adapter



## LS-135 Halogen Exam Light

- Long-lasting, 35-watt halogen lamp for whiter, brighter light than ordinary goose neck units
- Dual-intensity control switch allows instant adjustment of light output

#WC24-303 LS-135 with Floor Stand  
 #WC24-302 LS-135 with Wall Mount  
 #WC24-089 Casters  
 #WC53-103 Halogen Lamp



#WC24-089



## Welch Allyn Solid State Portable Headlight

Provides illumination precisely where it is needed, with cool, bright light that ensures comfort for both clinician and patient.

- Weighs just 4 ounces — one of the most comfortable and lightweight headlamps available
- Fits inside a shirt pocket and allows the user complete freedom of movement
- Supplies bright, white, shadow-free light for true tissue color

#WC24-403 Solid State Portable Headlight with Direct Power Supply/Charger  
 #49642 Soft Terrycloth Headbands (Box of 10)

Purchase a Solid State Portable Headlight and receive a FREE LiceMeister® comb.

“I can always tell if somebody tries to switch from Welch Allyn consumables to the cheap substitutes. They don't fit the instruments right, and I worry about the accuracy.”

— BARBARA J. CONNOR, MD  
 AUBURN, NY

## School Health Medicine Consumables

Product Name	Part No.	Ref. Page	Product Affiliation
Otoscope Tips for Diagnostic Otoscope	#WC53-021	9, 14, 15	KleenSpec® 524 Series Disposable Otoscope Specula for Diagnostic Otoscope, 2.5mm, 1,000/bag, 50/tube
	#WC53-022	9, 14, 15	KleenSpec® 524 Series Disposable Otoscope Specula for Diagnostic Otoscope, 4mm, 1,000/bag, 50/tube
Ear Wash System Tips	#WC42-074	13	Eartips for Ear Wash System (Case of 4 boxes or 100 eartips)
KleenScoop™	#WC53-119	12, 15	Combo Specula and Cerumen Remover
Thermometry Probe Covers	#WC21-177	9, 16	Disposable Temperature Probes Covers for SureTemp® Plus 690 and Spot Vital Signs® (1,000 each)
	#WC21-094	4	Disposable Temperature Probes Covers for Braun ThermoScan® Pro3000 (800 each)
Printer Paper	#WC52-319	10	SureSight™ Printer Paper (1 roll)
	#WC53-036	12	MicroTymp® 2 Printer Paper (5 rolls/box)

To view the full line of Welch Allyn and School Health products, including consumables, visit [www.schoolhealth.com](http://www.schoolhealth.com). You can also reach our knowledgeable sales staff by phone (800) 323-1305, or fax (800) 235-1305. We look forward to helping you improve the health and well being of those entrusted in your care.

### A WORD ABOUT THE CODING INFORMATION CONTAINED IN THIS CATALOG

Listed throughout this catalog are references to codes from the Current Procedural Terminology, Fourth Edition (CPT®). Please note that the coding information contained here is neither conclusive nor does it ensure that you will be successful in obtaining coverage and/or reimbursement from government and private payers.

Depending on circumstances that will vary from patient encounter to patient encounter, separate reimbursement may or may not be allowed for use of a Welch Allyn product used during a specific procedure or service. Use of the product may be included in the reimbursement for Evaluation and Management services provided by the physician. Please check with the specific payer to confirm whether or not the use of a separate code is acceptable. Welch Allyn does not assume any responsibility for the decisions made by payers regarding payment for procedures involving our devices when the coding information suggested in this catalog is used.

© CPT is a registered trademark of the American Medical Association. All Current Procedural Terminology (CPT) five-digit numeric codes, descriptions, numeric modifiers, instructions, guidelines, and other material are Copyright 2001 American Medical Association. All rights reserved.