

A man and a woman, both wearing light blue short-sleeved shirts, are engaged in a conversation at an outdoor table. The man is on the left, leaning forward slightly, and the woman is on the right, looking towards him. They appear to be in a casual setting, possibly a cafe or a break room, with a brick wall and greenery in the background. The overall tone is professional yet approachable.

DIAGNOSTIC INSTRUMENTS

WelchAllyn[®]

Advancing Frontline Care[™]

Innovation for life

INTRODUCTION

Who is Welch Allyn? 1

OPHTHALMOSCOPES

3.5v PanOptic™ Ophthalmoscope 2

Axial PointSource™ Optics 3

3.5v Coaxial Ophthalmoscope 4

Coaxial Vision System 5

POWER HANDLES

3.5v Lithium Ion Power Handle 6

3.5v Convertible Power Handle 7

OTOSCOPES

3.5v MacroView™ Diagnostic Otoscope 8

DIAGNOSTIC INSTRUMENTS

PocketScope™ Sets 9

DIAGNOSTIC SETS

3.5v Diagnostic Set Components 10

3.5v Diagnostic Sets 11

ACCESSORIES

12

ANEROIDS

Tycos® Classic Hand Aneroid 13

DuraShock™ Integrated Aneroid 13

DS-66 Hand Aneroid 14

STETHOSCOPES

Master Elite Sensor-Based Stethoscope 15

Harvey™ DLX Cardiology Stethoscope 16

Elite® Cardiology Stethoscope 17

Professional Stethoscope 17

Why Welch Allyn?

When you consider acquiring your first diagnostic instruments, it's important to be sure you're making the right choices. Your first choice is when to acquire your own instruments. The medical equipment presented here will be critical to your success in gaining the physical diagnosis skills that are fundamental to clinical practice. Investing in this equipment now will enable you to learn what you need to learn better and faster, because of the endless opportunities it will provide you to practice and perfect these skills on your peers, family members, and friends. The instruments you will consider here are as essential to you as a hammer is to a carpenter.

Your second choice is what brand of instruments should you buy. With nearly 100 years of experience designing and manufacturing innovative medical diagnostic instruments—and with the latest advances in physical diagnostic technology on the market today—Welch Allyn is the right choice. The instruments you will consider here are of the highest quality and thousands that have gone before you have told us they literally last a lifetime.

From our beginnings in 1915 with the invention of the world's first hand-held direct illuminating ophthalmoscope to our latest innovations like the PanOptic™ Ophthalmoscope and the MacroView™ Otoscope, Welch Allyn has long been the leader in diagnostic instruments. The proof? Ninety-five out of 100 physicians in the United States own Welch Allyn instruments—and count on them daily to help diagnose and treat their patients.

We'll be there

Our diagnostic instruments are rugged, durable, and dependable. We are so confident of the quality of our products, that no matter what you buy — whether it's an ophthalmoscope, a stethoscope, or even the lamp inside — we give you an unconditional guarantee while you're a student or resident (the only thing we do not cover is theft or loss).

If you drop it and it breaks, we'll repair or replace it. That's our guarantee, plain and simple.

So choose Welch Allyn. We'll be there for you.



Warranty Information

Diagnostic Sets

When you have completed your medical education and residency, Welch Allyn will continue to repair or replace, free of charge, for the expected life of the product, any parts of our manufacture in your 3.5v Diagnostic Set that prove to be defective for reasons other than misuse, neglect, damage during shipment, or normal wear and tear.

Tycos® Classic Sphygmomanometers

Tycos Classics feature a lifetime calibration warranty.

DS-66 Hand Aneroid

The DS-66 Hand Aneroid carries a 15-year calibration warranty.

Welch Allyn Cardiology Stethoscopes

The Elite® and Harvey™ DLX stethoscopes carry a 10-year warranty that will be extended at no charge if necessary, to cover your student and resident years.

Professional Stethoscopes

The Professional stethoscopes carry a 5-year warranty that also will be extended to include all your student and resident years.

3.5v PanOptic™ Ophthalmoscope

A view of the fundus that's
5X larger

What is the ophthalmoscope and what can be seen with it?

The ophthalmoscope is used to view the back of the eye, commonly called the fundus. This is the only place where arteries, veins, and nerves can be seen without surgically entering the patient. A good view of the fundus will not only give an indication as to the health of the eye, but will also tell you a lot about the patient's overall health. The effects of diabetes, hypertension, and neurological problems can be detected and followed with the ophthalmoscope.



What are the advantages of using the new PanOptic Ophthalmoscope?

- The PanOptic Ophthalmoscope offers:
 - Fast, easy entry into small, undilated pupils.
 - Superior views of the fundus — a field of view that is 5X larger than you see with standard scopes in an undilated eye.
 - A staggering 25° field of view versus the 5° field of view of standard scopes.
 - Greater working distance between practitioner and patient, improving comfort.
 - A 26% increase in magnification, making it easier to see retinal details.

Field of View



Standard

PanOptic Ophthalmoscope

5X larger view of the fundus

Revolutionary new technology for a difference you can see. Developed and patented by Welch Allyn — creator of the world's first hand-held, direct illuminating ophthalmoscope — the new PanOptic™ Ophthalmoscope is a breakthrough concept in ophthalmoscopy. Thanks to an innovative, proprietary optical design known as Axial PointSource™ Optics, the PanOptic Ophthalmoscope will greatly simplify your learning and performing funduscopy exams.

Axial PointSource Optics: Easy entry into undilated pupils, resulting in a view of the fundus that's 5X larger than standard ophthalmoscopes

Patented Glare Extinguishment System: Prevents interference from unwanted glare and reflections

Patient eyecup: The eyecup establishes and maintains proper viewing distance, provides image stability, serves as a pivoting point for panning around the retina, helps with orientation, and screens out ambient light. The eyecup is cleanable and reusable

Soft grip handle: Ergonomically designed for maximum comfort, balance, and access to controls


Dynamic focusing wheel: Continuous, smooth action for more precise control and optimum view

Aperture dial: Allows you to select from micro, small, and large spot sizes, slit aperture, red-free and cobalt blue filters



PanOptic Ophthalmoscope

PanOptic Ophthalmoscope head shown with Lithium Ion Power Handle

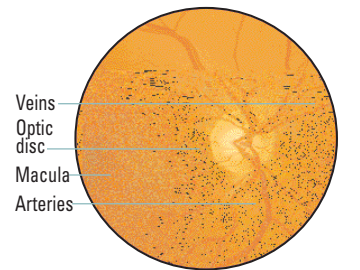
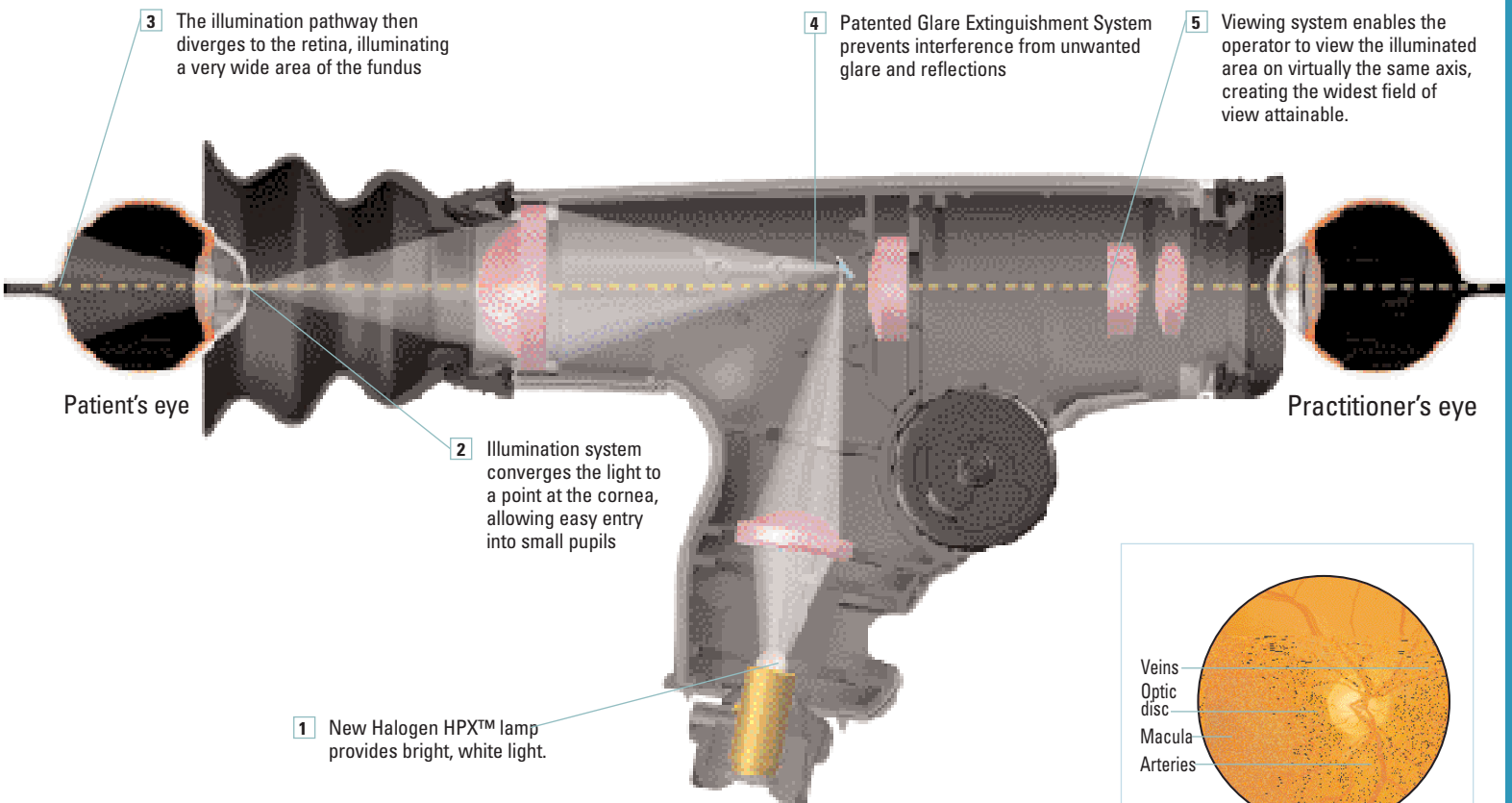
Instrument Head	Lenses	Filters	Optical System
	Dynamic focusing wheel for more precise control	Built-in Glare Extinguishment System	Patented Axial PointSource Optics

Axial PointSource™ Optics

What makes the PanOptic™ Ophthalmoscope so revolutionary? Quite simply, it's Welch Allyn's Axial PointSource Optics. By converging the illumination to a point at the cornea, Axial PointSource Optics allows easy entry into even the smallest pupils. It then enables the illumination pathway to diverge to the retina, creating a very wide illuminated area of the fundus.

Simultaneously, the scope's unique viewing system allows the practitioner to see the illuminated area on virtually the same axis, creating the widest field of view attainable in undilated ophthalmoscopy. This means the practitioner is actually viewing the fundus through the mirror that directs illumination into the eye, maximizing the alignment of the viewing axis with the illuminated area.

The bottom line? Welch Allyn's PanOptic Ophthalmoscope provides a dramatic difference you can see right away. And that translates into easier, more complete funduscopy exams for you — the first time and every time.



What you will see

The entire optic disc and surrounding vessels should be visible.

You should be realizing 5X the field of view you would see with a standard ophthalmoscope in an undilated eye.

This wide view makes it much easier to see important fundus features.

For more information on the PanOptic Ophthalmoscope, visit www.panoptic.welchallyn.com.

3.5v Coaxial Ophthalmoscope

Traditional quality, reliability, and performance

In keeping with the tradition of superior ophthalmic instruments, Welch Allyn's Coaxial Ophthalmoscopes provide benefits over other standard ophthalmoscopes including easier entry into the eye, a larger field of view, reduced glare, and bright, white Halogen HPX™ light.

Coaxial optical system: Provides greater field of view and easier entry into patient's pupil

Aperture selection dial: Offers six apertures, including the micro-spot

Compact head design: For ease of use; convenient access to all controls

Triple-sealed ophthalmoscope: Keeps dust from reaching optics

Cross-linear polarizing filter: A filter that eliminates unwanted reflections

Lens selection disc: Offers easy, fast, one-hand selection of focusing lenses



Coaxial Ophthalmoscope

Coaxial Ophthalmoscope head shown with Lithium Ion Power Handle

What apertures or "programs" of light are commonly used during a patient exam?

The majority of the time you will use the small aperture. This is the standard aperture for the examination of an undilated eye. The other two apertures you will use most often are the micro-spot and the large.

Small Aperture: Provides easy view of the fundus through an undilated pupil. Always start the examination with this aperture and proceed to micro aperture if pupil is particularly small and/or sensitive to light.


Large Aperture: For dilated pupil examination of the eye.

Micro-Spot Aperture: Allows easy entry in very small, undilated pupils, and light-sensitive eyes.

What is the purpose of the two colored filters?

Red-Free Filter: Excludes red rays from examination field for easy identification of veins, arteries, and nerve fibers.

Cobalt Filter: Used with fluorescein dye to view small lesions, abrasions, and foreign objects on the cornea.

Instrument Head	Lenses	Filters	Optical System
	28 lenses	Cross-linear polarizing Red-free	Coaxial optics

Coaxial Vision System

See a larger field of view

More readily enter the smallest pupils, regardless of pupil size

The doctor looks through the notch in the mirror directly along the pathway of the light, seeing a larger area of the retina

The exclusive curved-filament lamp and notch in the mirror are the patented enabling features of the coaxial vision system

The Welch Allyn Coaxial Vision System virtually eliminates shadowing, allowing you to see a much larger portion of the fundus when compared to a standard flat mirror optical system. Our coaxial system brings the lines of vision and illumination closer for easier entry of light into the pupil and a larger field of view. In short, it makes the job of learning ophthalmoscopy easier.

3.5v Lithium Ion Power Handle

What is the new “Smarter” battery technology?

The Lithium Ion Power Handle’s new technology provides twice the on-time with just half the weight. This “Smarter” technology also means no memory effect, often found in NiCad batteries. We also offer a low-battery indicator.

How do I adjust the power handle for maximum comfort?

When you remove the charger module, the Lithium Ion Handle becomes the smallest, full-size 3.5v handle available. The charger module can also be left attached for enhanced convenience and comfort for larger hands.



How do I recharge the batteries?

The Lithium-Ion Power Handle’s AC charging module can be plugged into any 110v outlet by clicking out the module’s retractable AC prongs and plugging it in.

Twice the on-time,
half the weight

Welch Allyn’s next-generation power handle features “Smarter” lithium ion battery technology. The Lithium Ion Handle powers any 3.5v instrument head for 110 minutes — twice as long as a conventional handle. Its rugged CYCOLOY® resin construction and flexible, ergonomic design make the Lithium Ion Handle more comfortable for any sized hand. ETL listed for medical safety standards.



Lithium-Ion Power Handle

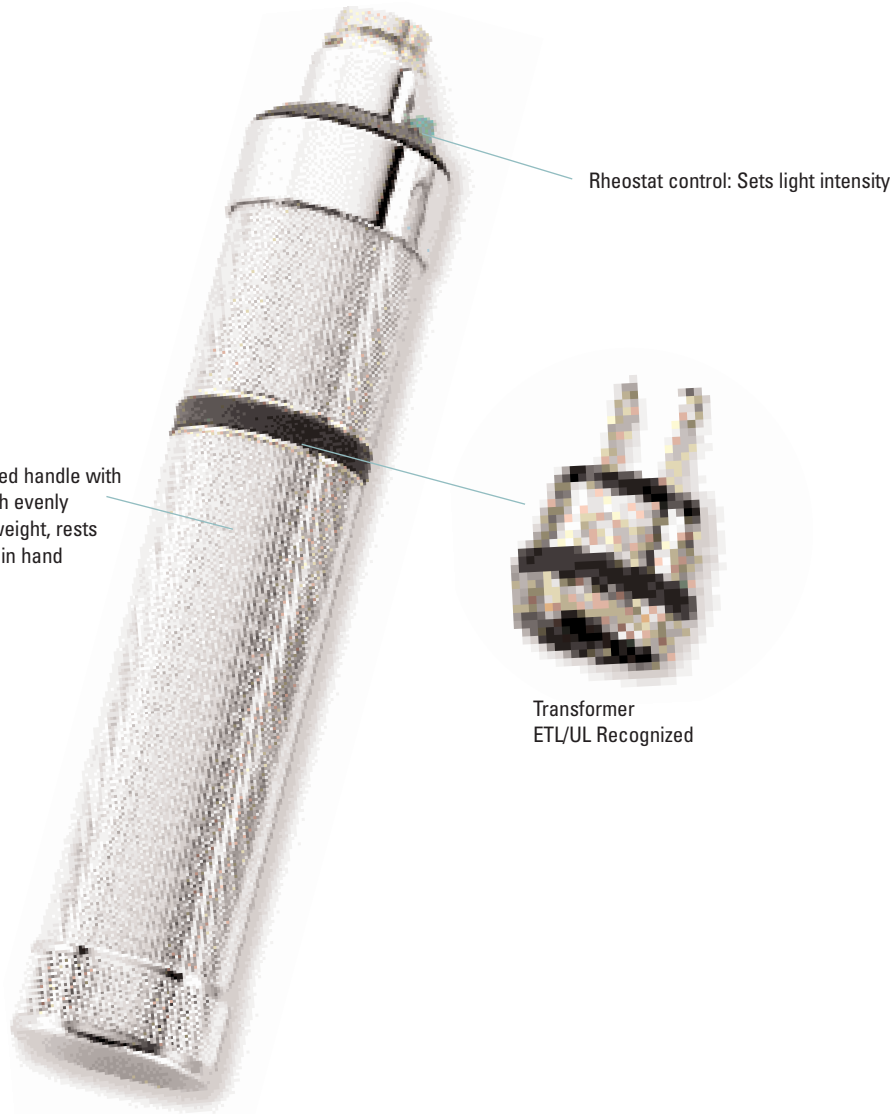


Recyclable battery.

Please return expended rechargeable batteries to Welch Allyn for recycling.

© CYCOLOY is a registered trademark of General Electric Company

3.5v Convertible Power Handle



Convertible Power Handle



Recyclable battery.

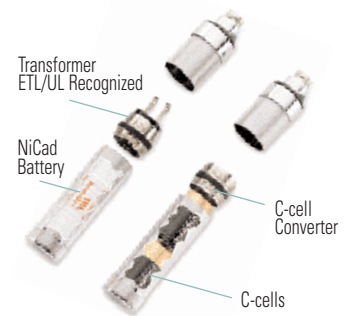
Please return expended rechargeable batteries to Welch Allyn for recycling.

Wherever you are,
you can power your
Welch Allyn 3.5v convertible handle

Use either rechargeable or C-cell batteries with Welch Allyn's 3.5v convertible power handle. Even if you've forgotten to recharge your battery or are practicing somewhere without available electricity, remove the transformer module, insert two C-cell batteries and converter ring (included), and continue your diagnostic exams.

When would the convertible handle most likely be used?

The convertible handle is a lifesaver if you are on call or taking an exam and have forgotten to recharge the battery. Also, the convertible handle is very useful when you are working overseas or in areas where it is difficult to find electricity.



How does this handle work with either rechargeable or C-cell batteries?

Simply remove the rechargeable battery and transformer, and replace with two C-cell batteries and a converter.



How do I recharge nickel cadmium batteries?

Our convenient built-in charger allows you to plug into any conventional 110v wall outlet for overnight recharging.

3.5v MacroView™ Diagnostic Otoscope with Throat Illuminator

What is the otoscope used for?

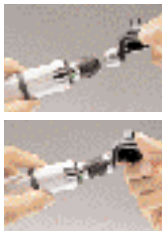
The otoscope is used to view the tympanic membrane and external ear canal to diagnose outer and middle ear pathologies.

How does the Welch Allyn otoscope convert to a throat or nasal illuminator?



Hold the throat illuminator's collar stationary (the black portion below the silver ring) and twist the otoscope section loose until it is removed. The throat illuminator is now ready for use.

Optional Nasal Illuminator Attachment



Optional fiber optic nasal illuminator attachment with 9 mm distal opening quickly twists onto the throat illuminator base for full view of nasal passages.

How durable is the Welch Allyn otoscope?

Extremely durable. Check out the busiest hospital and physician exam rooms to see what otoscope they use when durability counts. Welch Allyn otoscopes are engineered and manufactured for precision and longevity:

- They are manufactured with metal and high-impact ABS material.
- They have reinforced, flush-mounted fiber optics.
- A metal, flush-mounted insufflator port is included in the design.

Bigger, better, sharper view of the Tympanic Membrane

The MacroView Otoscope delivers almost twice the field of view at higher magnification compared to standard otoscopes, making it easier to visualize the auditory canal and tympanic membrane. This instrument is a significant advance in hand-held otoscopy, providing an improved view for enhanced learning and decision making.



2.5v Diagnostic Instruments

Lightweight, compact diagnostic instruments offering **high performance** in a smaller package

Welch Allyn PocketScopes™ are available with AA or rechargeable batteries, and use halogen illumination. Built with many of the features found on 3.5v sets, they are smaller in size, but not in utility.



Lens selection disc: Offers choice of 48 lens settings

Continuous aperture selection dial: Offers six apertures (on patient side)

Sealed optics: For improved long-term performance

Choice of specula: With reusable or disposable universal KleenSpecs

Insufflator port: For pneumatic otoscopy

Throat illuminator: Built-in

On/Off switch and rheostat control: Let you set intensity of illumination

AA PocketScope Sets

Pocket Oscope/Ophthalmoscope with AA alkaline batteries

92820 Hard case

92821 Soft case

Is the PocketScope Diagnostic Set popular with students?

Actually, fewer than 10% of all students purchase a pocket set. Some tell us the 3.5v sets are easier to learn on, but if you prefer a thinner handle, the PocketScope may be the answer for you.

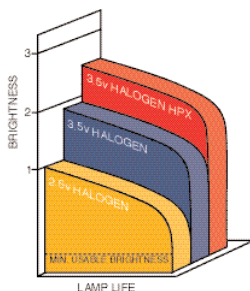
How do you use the throat illuminator on the PocketScope otoscope?

The built-in halogen throat illuminator offers the convenience of two instruments in one. Unscrew the otoscope head to reveal the high-intensity throat illuminator built into the otoscope base.

Bright, white light with Halogen HPX



Fiber optics transmit light through a 360° bundle of optical fibers for accurate, shadow-free exams. The fiber optics extend to the tip of the instrument for more light output, less glare, and easier cleaning.



Our Halogen HPX™ lamp system is an innovative lighting technology that uses a high-pressure mixture of halogen and xenon gases to provide 30% more light output than before.

Diagnostic Sets

What is a diagnostic set?

A basic diagnostic set consists of an ophthalmoscope for examination of the eye, an otoscope for examination of the ear, and a battery handle to power these instruments.

Why should I consider purchasing a Welch Allyn diagnostic set?

Owning your own diagnostic instruments will ultimately support your ability to be proficient. And, your proficiency with these diagnostic tools is essential for your goal of becoming a licensed practitioner.

Welch Allyn has the features, optics, and durability that make your job of learning how to examine the eyes and ears easier. This is important because you are investing in equipment that represents the fundamentals of your profession, and which will serve you throughout your education and career.

We provide you with innovative instruments such as the revolutionary PanOptic™ Ophthalmoscope providing a 5x larger view vs. a standard ophthalmoscope and the MacroView™ Otoscope providing 30% higher magnification and almost twice the field of view compared to a standard otoscope. Our lithium-ion handle provides twice the on time at half the weight.

Service is always local and prompt; Welch Allyn has the most extensive distributor network, and your equipment is unconditionally guaranteed while you are a student or resident.

What is the nasal illuminator used for?

The nasal illuminator provides a wider viewing area for examination of the nasal cavity. It comes complete with one, 9mm reusable speculum. This accessory is ideal for those students thinking of specializing in ENT.

3.5v Diagnostic Set Components

All Welch Allyn student diagnostic sets come with the following components:



When selecting the set that is right for you, consider which of these diagnostic components best fits your needs:

OPHTHALMOSCOPE



PanOptic™ Ophthalmoscope, page 2



Coaxial Ophthalmoscope, page 4

POWER HANDLE



Lithium Ion Handle, page 6



Convertible NiCad Handle, page 7

Diagnostic Sets

3.5v Diagnostic Sets

	OPHTHALMOSCOPES		POWER HANDLES		OTOSCOPES W/SET OF 4 REUSABLE SPECULA	NASAL ILLUMINATOR
Set Numbers	 PanOptic Ophthalmoscope	 Coaxial Ophthalmoscope	 Lithium Ion Handle	 Convertible NiCad Handle	 MacroView Otoscope w/Throat Illuminator	 Nasal Illuminator
NEW PANOPTIC OPHTHALMOSCOPE SETS						
97800-MS	■		■		■	
97810-MS	■		■		■	■
97800-MC	■			■	■	
97810-MC	■			■	■	■
TRADITIONAL COAXIAL OPHTHALMOSCOPE SETS						
97200-MS		■	■		■	
97210-MS		■	■		■	■
97200-MC		■		■	■	
97210-MC		■		■	■	■



Hard Case

Leather grained black vinyl with molded inserts.

05259-M Hard Case Only for Coaxial Ophthalmoscope Sets

05258-M Hard Case Only for PanOptic Ophthalmoscope Sets



Soft Case

Made of durable cordura with interior pockets for instruments.

05215-M Soft Case Only for Coaxial Ophthalmoscope Sets

05815-M Soft Case Only for PanOptic Ophthalmoscope Sets

Should I choose a hard or soft case for my diagnostic set?

It's a matter of personal preference. Both cases provide sufficient protection. The hard case lays the instruments out very nicely, but the soft case is somewhat smaller. It is very important that your set fit in your lab coat – both Welch Allyn cases allow for this.

Accessories

What are some of the innovations Welch Allyn has pioneered over the years?

Welch Allyn was the...

First to develop a hand-held, directly illuminated ophthalmoscope — 1915.

First to use fiber optics in otoscopes and other medical instruments — 1964.

First to use miniature halogen lamps for medical applications — 1973.

First to develop the only coaxial vision ophthalmoscope — 1983.

First to develop a 3.5v convertible handle — 1991.

First to use high-pressure xenon technology in a miniature halogen lamp — 1994.

First to deliver next-generation technology for diagnostic instrument handles — 1999.

First to develop Axial PointSource Optics for 5X the view of a standard ophthalmoscope — 2001.

Bivalve Nasal Speculum

Adjustable speculum facilitates removal of foreign bodies, autoclaveable for complete sterilization.



26035 Bivalve Nasal Speculum Only – for use with the diagnostic otoscope/throat illuminator

26038 Bivalve Nasal Speculum – complete with illuminator base

Insufflator Bulb

Attaches to port for pneumatic otoscopy.

latex free



23804 Insufflator Bulb

Pneumatic Otoscope

Includes powerful Halogen HPX™ lamp and rotating lens with ultra-seal for pneumatic otoscopy.



20200 Pneumatic Otoscope

Operating Otoscope

Features powerful Halogen HPX lamp and convenient open system.



21700 Operating Otoscope

Disposable Universal KleenSpec® Specula

2.5mm and 4mm disposable specula eliminate cross-contamination.

52432-U, 52434-U Disposable KleenSpec® Specula (850/bag)



Corneal Viewing Lens

Replaces the patient eyecup on the PanOptic Ophthalmoscope to provide extra magnification for exams of the cornea.



11875 Corneal Viewing Lens

Fiber Optic Nasal Illuminator

Provides superb view of nasal passages.

26535 Fiber Optic Nasal Illuminator Section – for use with diagnostic otoscope/throat illuminator

26538 Fiber Optic Nasal Illuminator – complete with illuminator base



Fiber Optic Finnoff Transilluminator

Eliminates patient discomfort in transillumination of frontal and maxillary sinuses.

41100 Fiber Optic Finnoff Transilluminator



Patient Eyecup

Package of 5 reusable eyecups for PanOptic Ophthalmoscope.

11870 Patient Eyecup



Classic Hand Aneroid Sphygmomanometer

Unsurpassed accuracy and durability in the traditional classic design

Taking a patient's blood pressure is one of the most frequent diagnostic tasks you'll perform throughout your medical career. Some 50 million Americans suffer from hypertension. Accurate measurement is essential in classifying the precise degree of hypertension and determining the correct treatment. The first Welch Allyn Tycos aneroid was made in 1907, and Welch Allyn is the only North American company to manufacture aneroid sphygmomanometers. Every gauge is manufactured to the exacting accuracy and quality standards which have made Welch Allyn Tycos the number one choice of medical professionals worldwide for more than 90 years.

Tycos® Classic Hand Aneroid

Built to last a lifetime, this traditional hand aneroid is one of the most popular blood pressure gauges in America. And Tycos Classic aneroids are the only instruments that incorporate synthetic rubies, a laser-engraved dial face, and a phosphor-bronze bellows to ensure reliability and accuracy. That is why Welch Allyn can provide you with a lifetime calibration warranty against manufacturing defects and accuracy within one percent of scale (± 3 mmHg).

5098-02 Tycos Classic Hand Aneroid with adult cuff in zippered case

Durable One-piece Cuff

1. More durable
2. Easy-to-use
3. Safe

latex free



Luer lock: Allows quick replacement of interchangeable cuffs

Phosphor-bronze bellows: Ensures stable pressure transmission.

Twist air-release valve: Provides constant and smooth deflation, is positioned for use with either hand

Lifetime calibration warranty

Laser-engraved dial face: Computer-matched and calibrated to guarantee consistent, accurate readings.

Jeweled movement: Synthetic rubies reduce friction and wear, ensuring long life

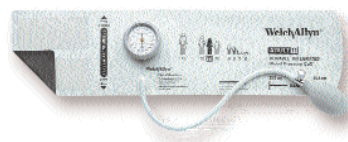
Traditional Cuff and Bladders

All sphygmomanometers are also available with two-piece cuff and bladder inflation system. Just add "CB" to the end of the part number (e.g. 5098-02CB).



Why should I invest in a sphygmomanometer when they can be so easily found all around the hospital?

Accurately interpreting the Korotkoff sounds that identify systolic and diastolic blood pressure is as much an art as a science. Owning your own sphygmomanometer will allow you to practice and gain competency in blood pressure measurement. Developing an expertise and becoming an advocate for accurate blood pressure measurement will not only allow you to directly provide better care, but it will also allow you to train others and maintain a high level of blood pressure expertise at your facilities in the future.



Welch Allyn DuraShock™ Integrated Aneroid

Welch Allyn's DuraShock Model DS44 offers quality and accuracy in an easily affordable system. It features a traditional thumb screw design and the gauge snaps directly onto the cuff. It is also shock resistant to 30 inches, lightweight and is backed by a 5-year calibration warranty.

DS44-11C Welch Allyn DuraShock Integrated Aneroid

Welch Allyn DS-66 Hand Aneroid Sphygmomanometer

An innovative trigger-release design for easy operation

Why is a sphygmomanometer so important?

High blood pressure (hypertension) affects more than 50 million Americans and plays a major role in deaths due to cardiovascular disease. The sphygmomanometer is your tool for early detection of this silent killer and will be used on nearly all your patients. It is vitally important to be well-trained in blood pressure measurement technique and to have an accurate, reliable instrument to properly diagnose hypertension. Inaccurate diagnosis can lead to inadequate or unnecessary medication and treatment.

What makes a Welch Allyn sphygmomanometer better than other brands?

Very simply: experience, quality, service. Welch Allyn has more experience in the design and manufacture of blood pressure instruments than any company in the world. Welch Allyn developed one of the first aneroid sphygmomanometers in 1907, and we continually introduce innovations that improve reliability and accuracy.

Welch Allyn brand instruments are of the highest quality. Most other brands include aneroid movements that are not even manufactured by the company offering the product. Welch Allyn has two manufacturing facilities devoted exclusively to blood pressure instruments.

Welch Allyn has been building relationships with healthcare providers like you for more than 85 years. We back our products with the best warranties in the industry. And we support you with more than 100 Welch Allyn field representatives, a network of thousands of distributor representatives, and manufacturing and service facilities around the world.

The DS-66 Hand Aneroid features a modern, ergonomic design to fit perfectly in the right or left hand. Combined with the smooth trigger deflation valve, the aneroid makes taking accurate blood pressure measurements easy and comfortable.

5098-27 DS-66 Hand Aneroid with adult cuff in zippered case (case not shown)



DS-66 Hand Aneroid, 4-Cuff Kit

With child print, small adult, adult, and large adult inflation systems in a dual-compartment zippered case. Ensures accurate measurements on all size arms (pictured).

5098-30 DS-66 Hand Aneroid, 4-Cuff Kit

Tycos® Classic Hand Aneroid, 4-Cuff Kit

With child print, small adult, adult, and large adult inflation systems in a dual compartment zippered case. Ensures accurate measurements on all arm sizes (not pictured).

5098-23 Tycos Classic Hand Aneroid, 4-Cuff Kit

Note: To order multi-cuff kits with cuff and bladder inflation systems rather than durable cuffs, just add a "CB" to the end of the part number (e.g. 5098-23BC).

All cuff and bladder multi-cuff kits ship with **three** cuffs: child print, adult, and large adult.

Master Elite Stethoscope with SensorTech™ Technology



Master Elite is 30X louder than conventional scopes

Proprietary speaker system enables optimum sound transmission

Adjustable joystick-style eartips ensure comfortable fit and seal

Binaural spring tension is adjustable for personal comfort.

latex free

On/off button with timer function

Dual-position filter switch allows you to switch between bell and diaphragm mode

Directional recessed pressure sensor allows for superior sound reproduction

External cable port for co-listening and connecting to a PC

What are the advantages of SensorTech Technology?

The product of several years of research and development, our SensorTech technology has truly perfected the art of registering, transmitting, and amplifying sound waves. The sensor picks up body sounds without sending a signal or energy into the patient's body. And the stethoscope's pre-defined frequency filters may help you hear the types of sounds that can enhance your ability to diagnose.



Harvey Heart Sounds CD

Every Master Elite comes with a free copy of Harvey Heart Sounds Sampler, an interactive CD for learning heart sounds.

Hear more of the sounds you need and less of the sounds you don't

The Welch Allyn Master Elite Stethoscope with patented SensorTech technology features a revolutionary microelectronic design, that greatly reduces sound loss and noise common in most conventional stethoscopes. The Master Elite provides unmatched amplification and an outstanding signal-to-noise ratio for clear, crisp sound reproduction. The two-position frequency selection switch lets you change from high (diaphragm) and low (bell) frequencies with ease. The replaceable battery has a normal lifetime of one year. Additionally, the Master Elite has accessories including the "Distributor" that lets up to five colleagues co-listen and the "Analyzer" which is a PC-based software that captures heartsounds for storing, sharing, e-mailing, and consulting with colleagues.

Master Elite Sensor-based Stethoscope

- 5079-405S Master Elite Stethoscope
- 5079-401 Distributor
- 5079-402 Analyzer

Harvey DLX Cardiology Stethoscopes

What should I look for in a stethoscope?

You want to be sure that the stethoscope fits correctly. If you can't get sound past the eartip to your tympanic membrane, all other features are unimportant. The more custom the fit, the easier the sounds travel to your ear.

As a student, you must consider the versatility of the scope. Remember you will be doing rotations, including pediatrics and cardiology. The Harvey DLX and Elite, for example, adapt easily for pediatrics, and the bell is essential for cardiology.



Harvey Heart Sounds CD

Every Harvey DLX and Elite Stethoscope comes with a free copy of **Harvey Heart Sounds Sampler**, an interactive CD for learning heart sounds.

Cardiology Accessory Kit

Both the Harvey DLX and Elite stethoscopes come with a Cardiology Accessory Kit which includes a pediatric diaphragm for auscultation of infants and neonates, and three sets of eartips.

Pediatric Diaphragm Assembly

- One Pair Medium Soft Eartips
- One Pair Large Hard Eartips
- One Pair Extra Large Hard Eartips

Comfort sealing eartips: Allow you to effectively seal the ear, while also providing sufficient comfort

Rotatable binaurals

Triple-leaf spring

Name tag

Dual lumen, latex-free tube: 25" tubing provides sufficient reach and meets requirements for latex-free healthcare facilities

latex free

Low-frequency bell: Detects lower-frequency sounds and murmurs at 20-100 Hz

Multi-head brass chestpiece: Includes bell and flat diaphragm

High-frequency diaphragm: Detects higher-frequency heart and lung sounds at 100-1,000 Hz

Superior high-frequency response makes it the **smart choice** for auscultation

Harvey DLX delivers the easiest-to-hear and most accurate heart sounds of any stethoscope available today. Harvey DLX cardiology stethoscopes are designed by the pre-eminent Dr. Proctor Harvey to accentuate the critically important high-frequency heart sounds like clicks, murmurs, and ejection sounds. Includes interchangeable pediatric and adult diaphragms. 10-year warranty.

Harvey™ DLX Double Head Models

- 5079-325** Harvey DLX Double Head Stethoscope (Black)
- 5079-326** Harvey DLX Double Head Stethoscope (Burgundy)
- 5079-327** Harvey DLX Double Head Stethoscope (Navy)
- 5079-328** Harvey DLX Double Head Stethoscope (Forest Green)

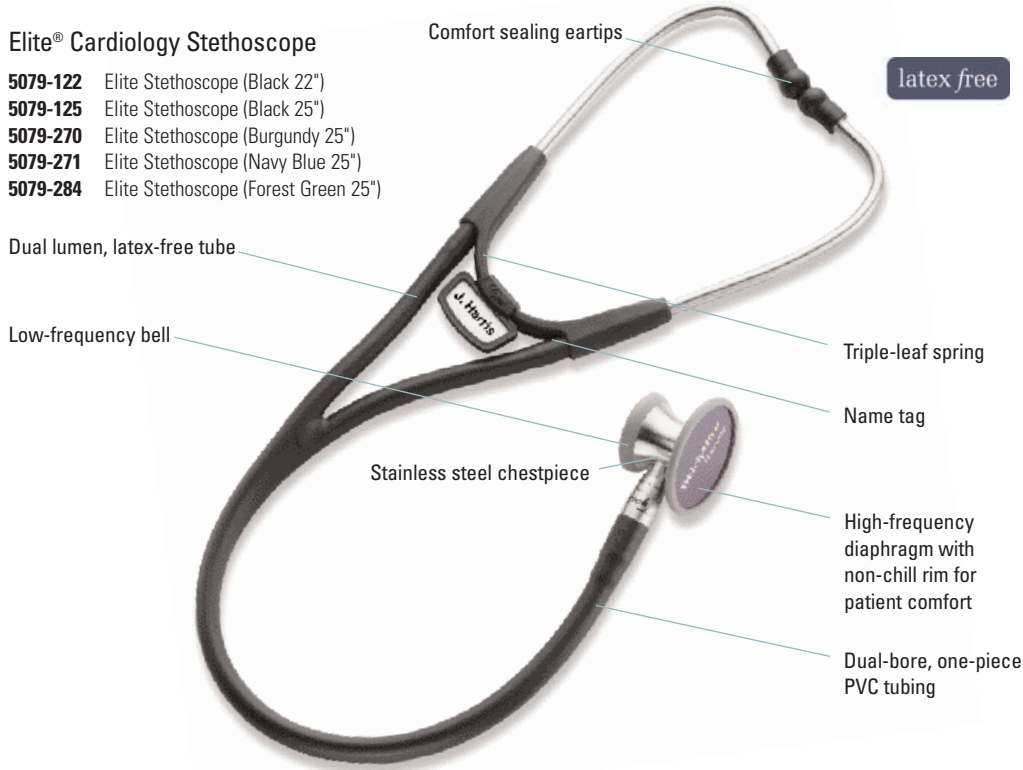
Elite® Cardiology and Professional Stethoscopes

Two tubes provide **individual sound** to each ear

The Elite Cardiology Stethoscope, also designed by Dr. Proctor Harvey, combines the acoustic excellence of the Harvey DLX, with a sleek stainless steel chestpiece and non-chill rims. Includes interchangeable pediatric and adult diaphragms. 10-year warranty.

Elite® Cardiology Stethoscope

- 5079-122** Elite Stethoscope (Black 22")
- 5079-125** Elite Stethoscope (Black 25")
- 5079-270** Elite Stethoscope (Burgundy 25")
- 5079-271** Elite Stethoscope (Navy Blue 25")
- 5079-284** Elite Stethoscope (Forest Green 25")



Full-range **performance** in lightweight stethoscopes

Comfort sealing eartips and light weight make the Professional the most comfortable stethoscope manufactured today. From blood pressure measurement to low-frequency murmurs, the Professional enhances your auscultation capabilities.

- 5079-135** Professional Stethoscope (Black 28")
- Also available in gray, navy blue, and burgundy.



What is the advantage of a two-tube stethoscope?

Two-tube stethoscopes, such as the Harvey DLX and Elite, provide an individual sound channel to each ear. This allows you to hear the subtle characteristics of heart sounds and murmurs more distinctly. The heavier tubing also filters out the distracting noise typical of a busy medical environment.

What makes a Welch Allyn stethoscope better than other brands?

Three key elements differentiate Welch Allyn stethoscopes: better performance, higher quality, and more value.

Performance: Welch Allyn Harvey and Elite cardiology stethoscopes are designed by the pre-eminent Dr. Proctor Harvey – the first and only “Master” of cardiology bestowed by the American College of Cardiology. Dr. Harvey designed these stethoscopes to accentuate the more important high-frequency ejection sounds, systolic clicks, and murmurs.

Harvey and Elite stethoscopes also conform to American Heart Association (AHA) guidelines that indicate a stethoscope should include a diaphragm (for high-frequency sounds) and bell (for low-frequency sounds). Many competitive brands have only a diaphragm. Unlike other brands, Harvey DLX and Elite also have adjustable binaurals, as per AHA guidelines.

Quality: Welch Allyn cardiology stethoscopes are rugged, and are backed with warranties that typically exceed competitive models by two or more years.

Value: Welch Allyn Harvey and Elite stethoscopes are convertible, including both adult and pediatric diaphragms. It's like getting two stethoscopes for the price of one.

Worldwide Locations

Welch Allyn facilities supported
by European Customer Service
at Welch Allyn Ltd.,-SSC. (Ireland,
France, Germany, Italy, Iberia, UK)

WELCH ALLYN
4341 State Street Road, PO Box 220, Skaneateles Falls, NY 13153-0220 USA
800.535.6663 (in USA) 315.685.4560 fax 315.685.0054

WELCH ALLYN
7420 Carroll Road, San Diego, CA 92121-2334 USA
800.535.6663 (in USA) 858.621.6600 fax 858.621.6610

WELCH ALLYN
8500 SW Creekside Place, Beaverton, OR 97008-7107 USA
800.289.2500 (in USA) 503.530.7500 fax 503.526.4919

WELCH ALLYN
1000 Asbury Drive, Buffalo Grove, IL 60089 USA
800.462.0777 (in USA) fax 847.520.0303

WELCH ALLYN CANADA LTD.
160 Matheson Blvd. East, Unit #2, Mississauga, Ontario L4Z 1V4 Canada
800.561.8797 (in Canada and USA) or 905.890.0004 fax 905.890.0008

EUROPEAN CUSTOMER SERVICE
Navan Business Park, Dublin Road, Navan, County Meath Ireland
+353 46 906 7790 fax +353 46 906 7754
UK telephone 0 207 365 6780 UK fax 0 207 365 9694

WELCH ALLYN U.K.
Cublington Road, Aston Abbotts, Buckinghamshire HP22 4ND England
0 207 365 6780 fax 0 207 365 9694

WELCH ALLYN ITALIA SRL
Via Napo Torriani, 29 20124 Milan Italy
0 02 6699 291 fax 0 02 6671 3599

WELCH ALLYN GERMANY
Postfach 31, Zollerstrasse 2-4, 72417 Jungingen Germany
0 7477 92710 fax 0 7477 927190

WELCH ALLYN FRANCE
814 Rue Charles de Gaulle, 77100 Mareuil Les Meaux France
0 1 6009 3366 fax 0 1 6009 6797

WELCH ALLYN IBERIA
Leopoldo Alas Clarin 8, Local 7, 28035 Madrid Spain
0 91 386 3047 fax 0 91 386 1029

WELCH ALLYN AUSTRALIA PTY. LTD.
Unit 5, 38-46 South Street, Rydalmere NSW 2116 Australia
02 9638 3000 fax 02 9638 3500

WELCH ALLYN CHINA
Unit 1011 Central Plaza, No. 227 HuangPi North Rd., Shanghai China 200003
21 6327 9631 fax 21 6327-9632

WELCH ALLYN JAPAN K.K.
6F Kinseisha Bldg., 3-15 Kanda-nishikicho, Chiyoda-ku Tokyo 101-0054 Japan
3 3219-0071 fax 3 3219-0074

WELCH ALLYN SINGAPORE
10 Hoe Chiang Road, #19-03/04, Keppel Towers Singapore 089315
6419 8100 fax 6291 5780

WELCH ALLYN PTY. LTD, S. AFRICA
394 Surrey Ave., Ferndale, Randburg 2194 South Africa
0 11 777 7509 fax 0 11 777 7501

4341 State Street Road, P.O. Box 220, Skaneateles Falls, NY 13153-0220 USA
(P) 800-535-6663 (F) 315-685-3361 www.welchallyn.com

WelchAllyn[®]

Advancing Frontline Care[™]